

Scholar's Mate



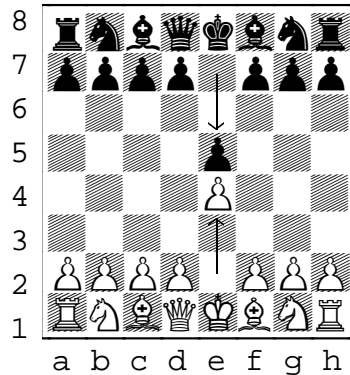
King Chess Club
CHESS

A PieceTakers Mini-lesson Level: Novice

Scholar's Mate is a fast checkmate often used against beginning players.

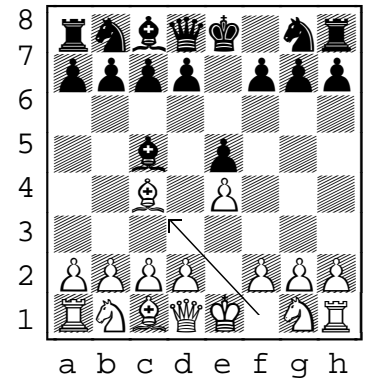
1) Scholar's Mate starts off with a typical king pawns opening:

White e2-e4
Black e7-e5



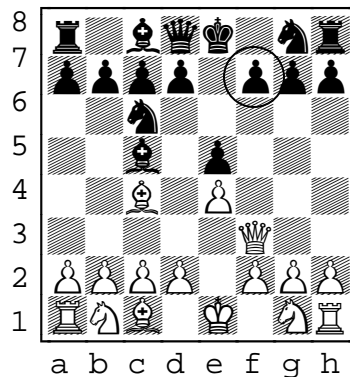
2) Next white moves the bishop f1-c4, putting pressure on the black pawn at f7.

We'll have black respond with a copycat move Bf8-c5.



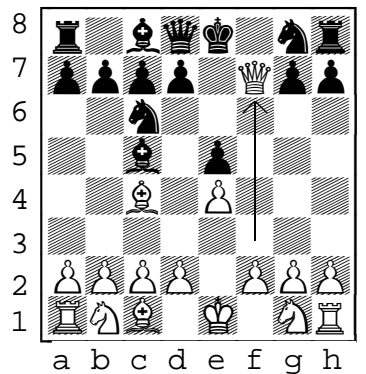
3) Now white brings out the queen with d1-f3 putting a double attack on the f7 pawn.

We'll have black respond with Nb8-c6??.



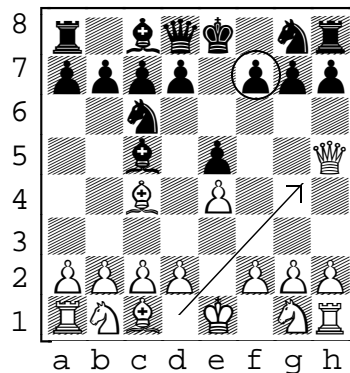
4) Time for the checkmate with

Qh5xf7++



5) There are variations including this queen move of Qd1-h5.

The effect is still the same with a mate with the queen at f7 defended by the white bishop.



6) Defense against the Scholar's Mate can be fairly easy if you see it coming.

For example, after white's Bf1-c4, try Ng8-f6. This protects against both white moves Qd1-f3 and Qd1-h5.

